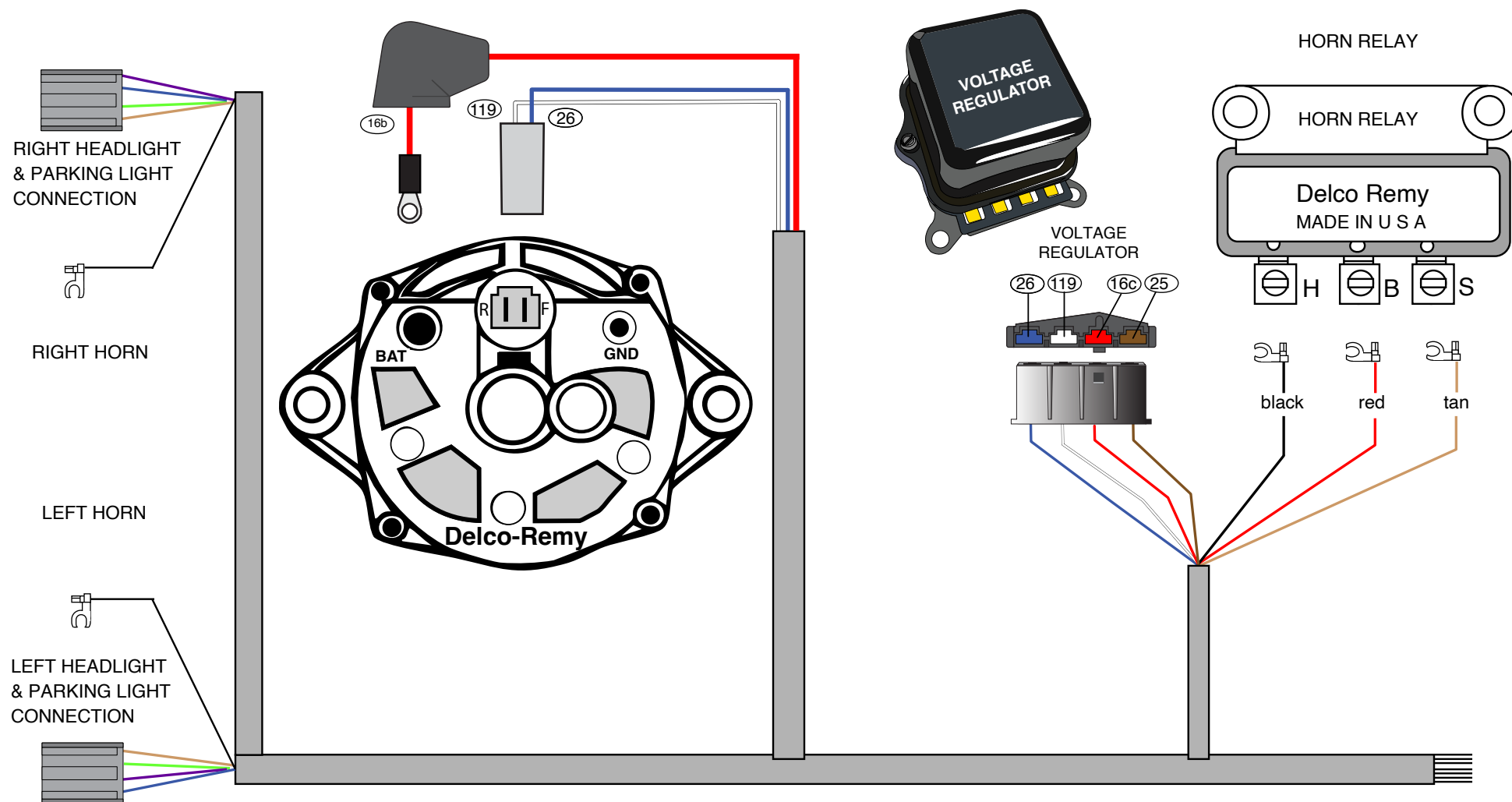


FIGURE 1 - Connections in the engine compartment



©1995
M.Parker Autoworks
all rights reserved

Information and illustrations on this instruction sheet are the property of M. Parker Autoworks, Inc. No part of this sheet may be reproduced without licensing approval from M. Parker Autoworks, Inc.

CE509322

WIRE USAGE CHART INSTRUCTION SHEET

DASH HARNESS - 1955 CHEVY
w/ Externally Regulated Alternator

CE509322

WIRE	WIRE COLOR	GA.	CIRCUIT DESCRIPTION
1 a	black	16	In-line horn wire splice to horn
1 b	black	16	In-line horn wire splice to horn
1 c	black	14	Horn relay to in-line horn wire splice
2 a	purple	18	Left hand headlight/park light connector to right hand headlight/park light connector
2 b	purple	18	Headlight switch "PARK" terminal to left hand headlight/park light connector
3 a	LT. GREEN	18	Dash high beam indicator light to in-line headlight splice
3 b	LT. GREEN	18	In-line headlight splice to left hand headlight/parking light connector
3 c	LT. GREEN	18	Left hand headlight/park light connector to right hand headlight/park light connector
3 d	LT. GREEN	18	Dimmer switch "HIGH" terminal to in-line headlight splice
4 a	tan	18	Left hand headlight/park light connector to right hand headlight/park light connector
4 b	tan	18	Dimmer switch "LOW" terminal to left hand headlight/park light connector
5 a	dark blue	18	Dash right indicator light to steering column connector
5 b	dark blue	18	Steering column connector to right hand headlight/park light connector
6 a	lt blue	18	Steering column connector to left hand headlight/park light connector
6 b	lt blue	18	Dash left indicator light to steering column connector
7	pink	18	Rear body connector left hand directional lead wire to steering column connector
8	purple	18	Rear body connector right hand directional lead wire to steering column connector
10	brown	18	Dash alternator indicator light to internal alternator splice
11	lt blue	18	Headlight switch "HEAD" terminal to dimmer switch "BAT" terminal
12 a	orange	18	Rear body connector to stop light switch connector
12 b	orange	18	Headlight switch "STOP" terminal to stop light switch
13	white	18	Steering column connector to stop light switch
14	black	18	Headlight switch "TAIL" terminal to rear body connector
15	tan	18	Horn button connector to Horn relay
16 a	red	14	In-line battery power splice to horn relay "BAT" terminal

WIRE USAGE CHART INSTRUCTION SHEET

DASH HARNESS - 1955 CHEVY
w/ Externally Regulated Alternator

CE509322

<u>WIRE</u>	<u>WIRE COLOR</u>	<u>GA.</u>	<u>CIRCUIT DESCRIPTION</u>
16 b	red	10	In-line battery power splice to alternator "BAT" terminal
16 c	red	18	In-line battery power splice to alternator voltage regulator connector
16 d	RED	12	Headlight switch "BAT" terminal to in-line battery power splice
16 e	red	18	Glove box light power lead to in-line battery power splice
16 f	red	18	Clock power lead to in-line battery power splice
16 g	red	14	Cigarette lighter power lead to in-line battery power splice
16 h	red	10	In-line battery power splice to ignition switch "BAT" terminal
16 j	red	10	In-line battery power splice (internal wire that does not appear on the illustration)
17	yellow	18	Steering column connector to turn signal flasher
18	brown	18	Rear body connector fuel sender lead wire to fuel gauge
19 a	GRAY	18	Clock light lead to in-line instrument light splice
19 b	GRAY	18	Ignition switch light lead to in-line instrument light splice
19 c	GRAY	18	Dash light to in-line instrument light splice
19 d	GRAY	18	Dash light to in-line instrument light splice
19 e	GRAY	18	Dash light to in-line instrument light splice
19 f	GRAY	18	Headlight switch "PANEL" terminal to in-line instrument light splice
20	white	18	Headlight switch "DOME" terminal to rear body connector
21 a	pink	18	Ignition switch "ACC" terminal to turn signal flasher
21 b	pink	18	Ignition switch "ACC" terminal to fuel gauge "+" terminal
21 c	pink	16	Ignition switch "ACC" terminal jumper
22	brown	18	Ignition switch "ACC" terminal to in-line alternator splice
22 a	brown	16	Ignition switch "ACC" terminal jumper
25	brown	16	In-line alternator splice to alternator voltage regulator connector
26	dk blue	16	Alternator connector to alternator voltage regulator connector
119	white	16	Alternator connector to alternator voltage regulator connector
130	brown-white resistance	24	Ignition switch "ACC" terminal to in-line alternator splice